

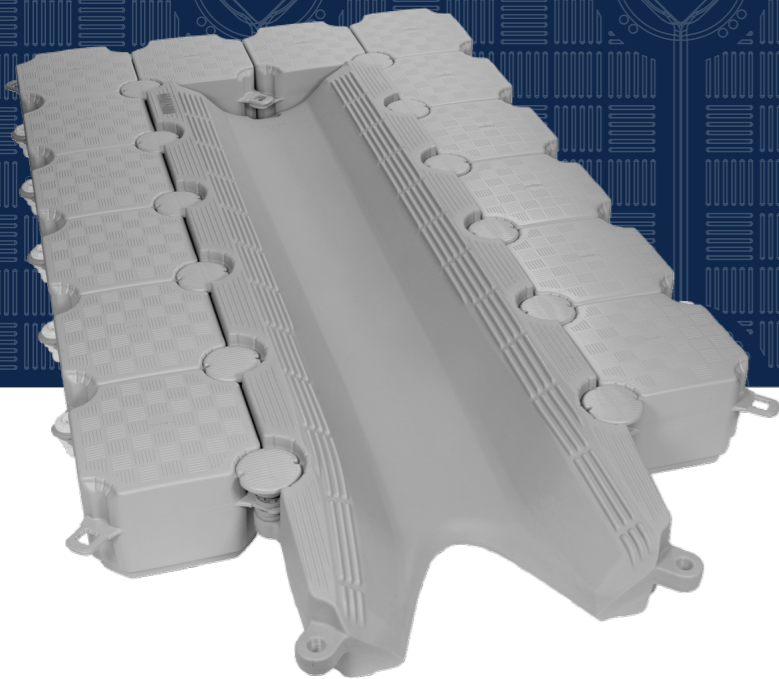
DOCKPRO

MODULAR FLOTATION SOLUTIONS

JETSLIDE SYSTEM

HDPE

COMPATIBLE WITH BOTH MONO AND CATAMARAN HULL FORMS



Specifications

Dimensions	H: 38 cm (15") ; L: 288 cm (114") ; W: 96 cm (38")
Weight	68 kg (150 lbs)
Colours	Gray (other colours on special request)

KEY FEATURES

- Fully supports vessels, down their entire water length, without any point loading.
- Foam filled interior.
- Unique groove system makes launching and docking easier.
- "V" opening enables effortless docking and brings the engine closer to the dock.

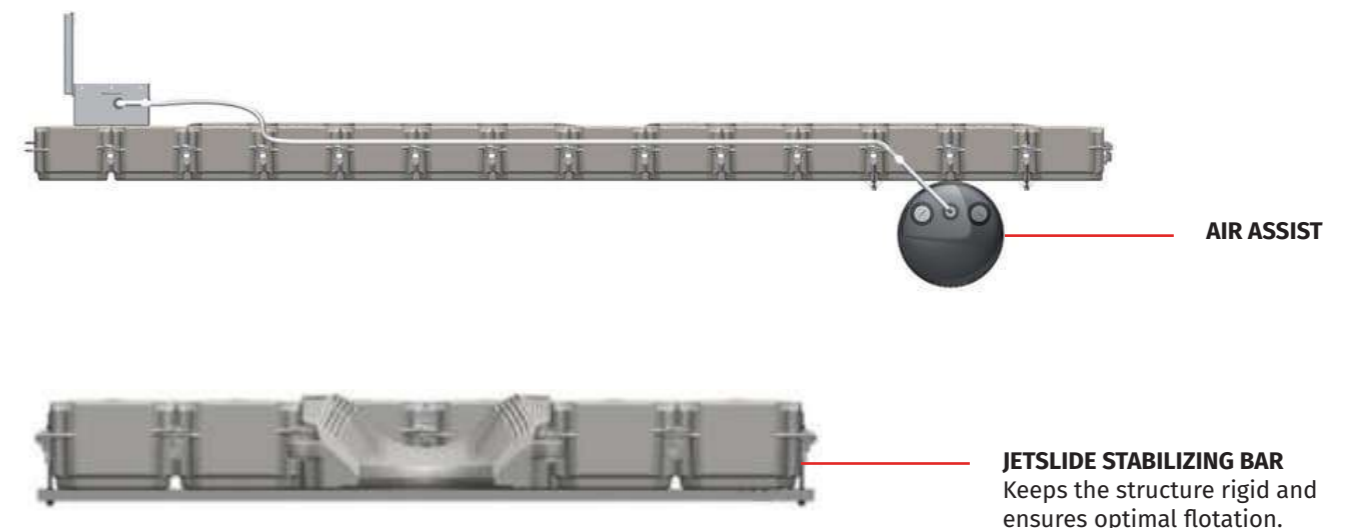


The JETSLIDE has been especially designed to evenly distribute the watercraft's weight, thus preventing any excessive pressure on the hull.

AIR ASSIST

The JETSLIDE system can also be fitted with AIR ASSIST -the most effective Variable Buoyancy system on the market. This is utilised to accommodate boats with masses over 1360 kg's and helps reduce the overall JETSLIDE system's footprint – ideal in cramped/marina locations.

EXPLORING THE JETSLIDE (HDPE) SYSTEM COMPONENTS



THE G2 JETSLIDE DRY DOCK

The JETSLIDE is a unique patented dry dock system that protects the hull of your watercraft from the accumulation of shellfish and marine vegetation affecting the performance of your boat.

With the JETSLIDE, you'll eliminate both maintenance costs and premature wear and tear on your watercraft. It requires no maintenance, is easy to assemble, clean, aesthetic, very flexible and compatible with different types of watercraft. The JETSLIDE also enables you to safely walk around your pleasure craft. No more metal structures obstructing your view.

The JETSLIDE is made of new-generation plastic providing you with a top-quality product that features cutting edge technology. It's both lightweight and resistant to impact, chemical products, UV rays and weather variations. It will remain afloat, even under the worst conditions thanks to its foam filled interior.