

DOCKPRO

MODULAR FLOTATION SOLUTIONS

EVENTS



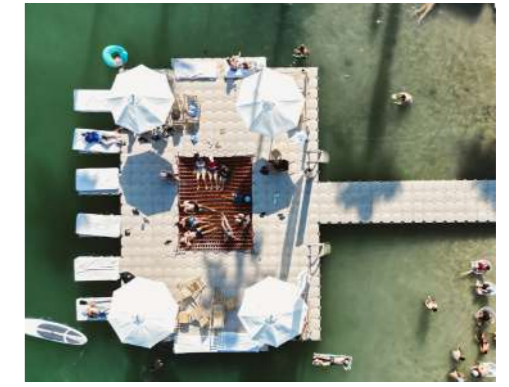
FLOTATION SOLUTIONS

We offer rental and purchase options for sport events, corporate functions and special occasions.

Our modular solutions are customised to your exact needs. Their flexible design allows for endless configurations and sizes. We offer an impressive safe working load of 100kg's of buoyancy per square meter, this is sufficient to support large crowds, vehicles, tents and even concert stages.

Dockpro offers a diverse range of floating solutions for events, providing our clients with customized options to make their event truly unforgettable.

EVENT STAGES AND PLATFORMS



PEDESTRIAN BRIDGES



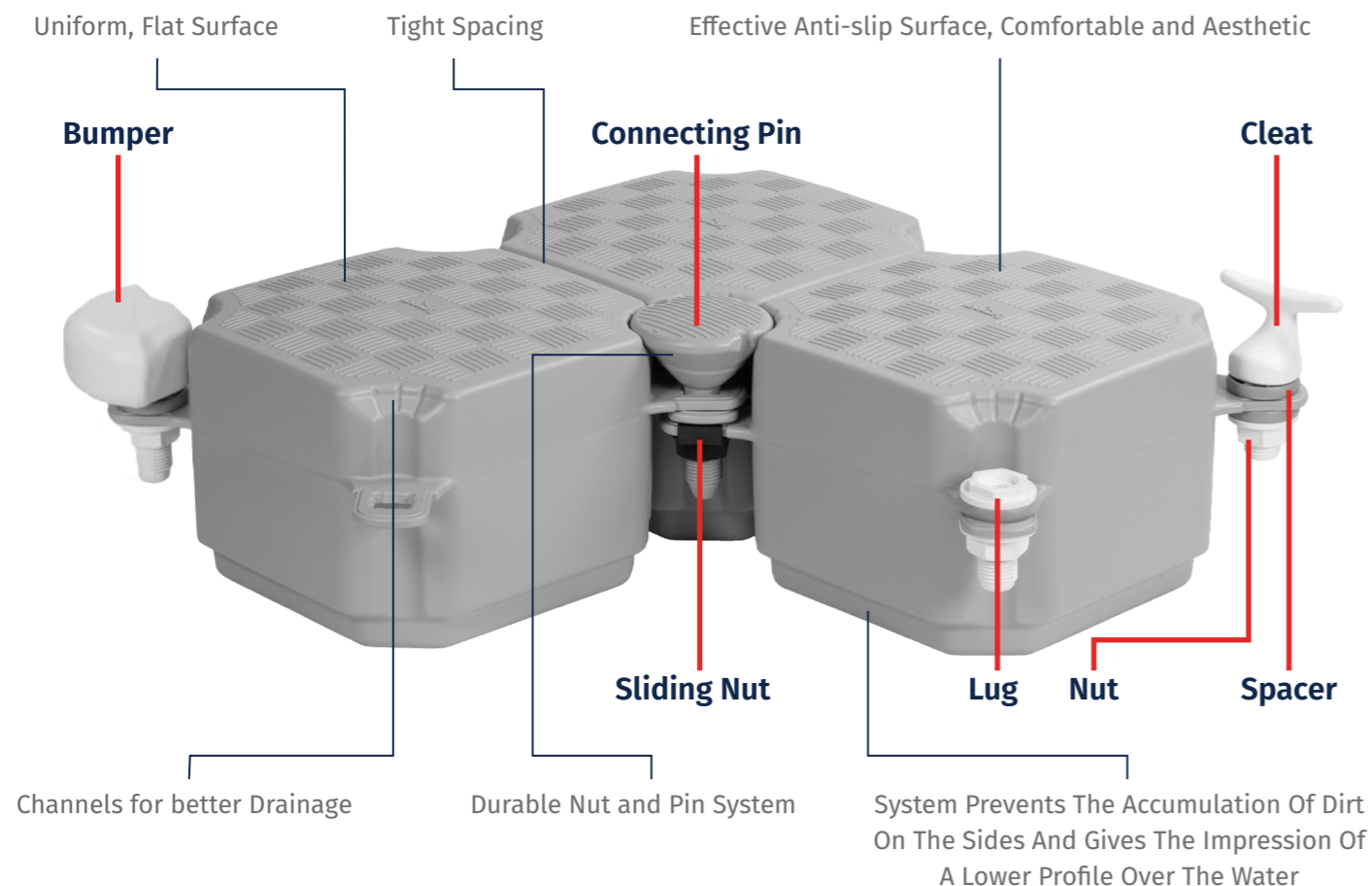
SPORT EVENTS



HELIPORT PONTOONS



ADVANTAGES



Unlimited Number Of Potential Configurations

This Revolutionary system's flotation modules meet the precise needs of any shoreline, and can be assembled to create whatever shape and size you like. The configuration options are limitless It's all up to your imagination!

Easy And Quick Assembly

The Candock system is simple: the modules are held together tightly and firmly with special connecting pins. All parts are lightweight and easy to handle.

Lightweight, Sturdy And Safe

The safety aspect of nautical products is critical. This is why the Candock system has undergone rigorous testing. Its safety features include dock stability, high load capacity, an anti-skid surface and the absence of metal parts.

Environmentally Friendly

The modular structure's components do not oxidize or deteriorate in any way. Thus, the environment where the dock is floating stays in its natural state.

Maintenance-free (100% Plastic)

With the Candock system, the concept "maintenance-free" means ZERO maintenance - no more, no less. No more lost time, no more expenses, and no more work to be done on a conventional wooden or metal platforms year after year.

Pollution And UV Resistant

Made of high density polyethylene resin, Candock systems are remarkably resistant to impact, climate change, the adverse effects of water and the sun and a wide range of chemical products.

CHARACTERISTICS

MATERIAL/COMPOSITION

High-density polyethylene resin

COLOURS

Gray
Black (industrial use only)
Other colours by special request

SURFACE

Anti-skid

DIMENSIONS

L x W: 48 cm (19") x 48 cm (19")
H: 36 cm (14")

DIMENSIONS

L x W: 48 cm (19") x 48 cm (19")
H: 23 cm (9")

WEIGHT

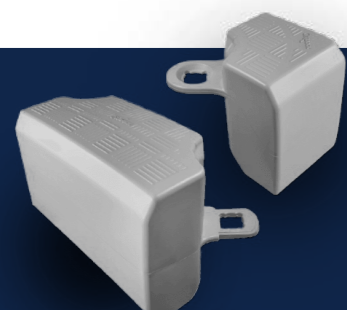
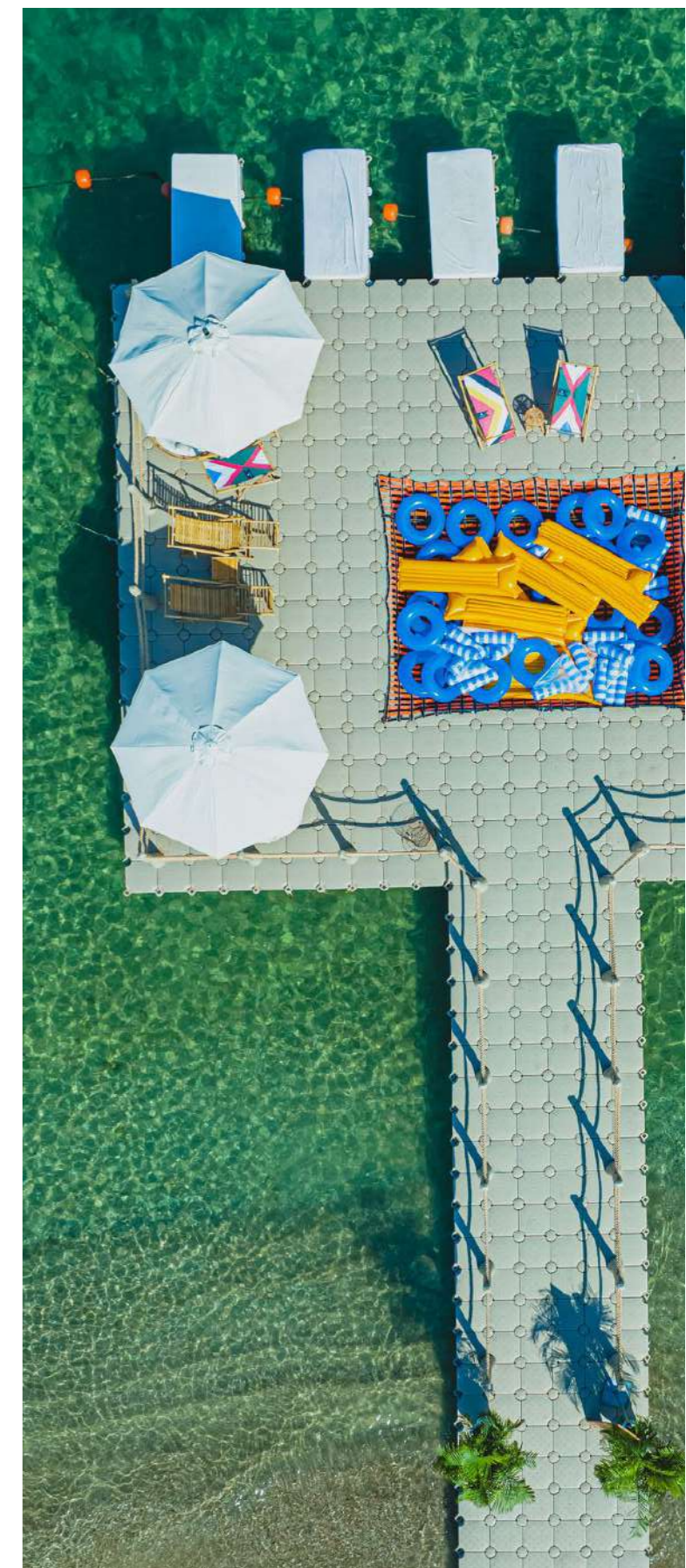
Cube: 5.5 kg (12 lbs.)
Cube: 5 kg (11 lbs.)

FLOATING CAPACITY

Cube: 272 kg per m²
Cube: 210 kg per m²

SAFE WORKING LOAD

Single Layer: 100 kg per m²
Double Layer: 372 kg per m²



Meet the latest member of the Candock product range, our exclusive **Edge Line Accessory Range**. By engaging with our thousands of customers, we have come up with a way to meet your needs with the safest, most rugged and affordable way to improve the look of your Candock jetty!

With its slick and smooth dock outskirts, you can moor your boats and PWC's alongside a Candock Edge Line System, carefree!

Unleashing the extraordinary, our customizable floating solutions deliver exceptional versatility, buoyancy, and unforgettable experiences for your events.