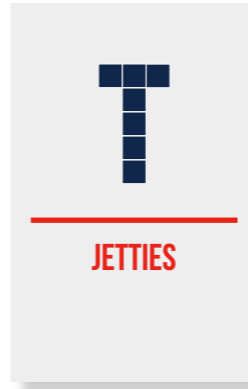


DOCKPRO

MODULAR FLOTATION SOLUTIONS

RECREATIONAL



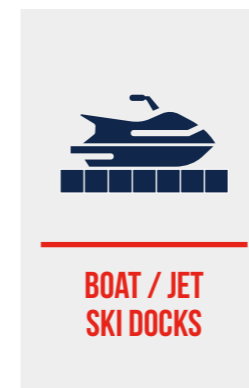
FLOTATION SOLUTIONS

Our systems have become a must for residential, marina and recreational facility docks.

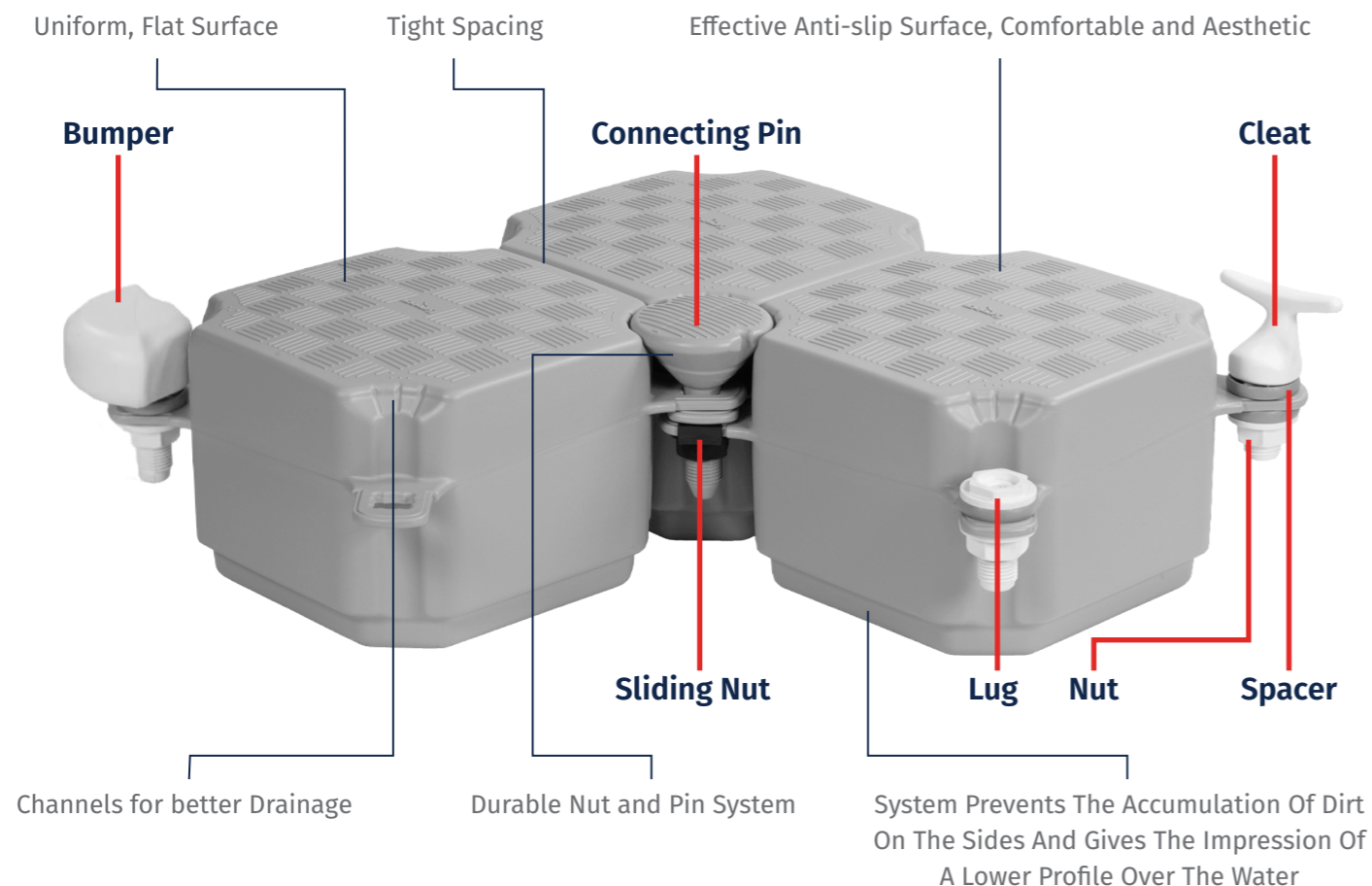
When compared to wooden, metal or cement docks, its advantages are crystal clear: just consider its exceptional lifespan and its high resistance to the most severe weather conditions.

Our HDPE system is environmentally friendly and requires no maintenance.

Reliable and easy to use, it provides unlimited configurations and application options.



ADVANTAGES



Unlimited Number Of Potential Configurations

This Revolutionary system's flotation modules meet the precise needs of any shoreline, and can be assembled to create whatever shape and size you like. The configuration options are limitless It's all up to your imagination!

Easy And Quick Assembly

The Candock system is simple: the modules are held together tightly and firmly with special connecting pins. All parts are lightweight and easy to handle.

Lightweight, Sturdy And Safe

The safety aspect of nautical products is critical. This is why the Candock system has undergone rigorous testing. Its safety features include dock stability, high load capacity, an anti-skid surface and the absence of metal parts.

Environmentally Friendly

The modular structure's components do not oxidize or deteriorate in any way. Thus, the environment where the dock is floating stays in its natural state.

Maintenance-free (100% Plastic)

With the Candock system, the concept "maintenance-free" means ZERO maintenance - no more, no less. No more lost time, no more expenses, and no more work to be done on a conventional wooden or metal dock year after year.

Pollution And UV Resistant

Made of high density polyethylene resin, Candock systems are remarkably resistant to impact, climate change, the adverse effects of water and the sun and a wide range of chemical products.

CHARACTERISTICS

MATERIAL/COMPOSITION

High-density polyethylene resin

COLOURS

Gray
Beige
Other colours by special request

SURFACE

Anti-skid

DIMENSIONS

L x W: 48 cm (19") x 48 cm (19")
H: 36 cm (14")

DIMENSIONS (LOW PROFILE CUBE)

L x W: 48 cm (19") x 48 cm (19")
H: 23 cm (9")

WEIGHT

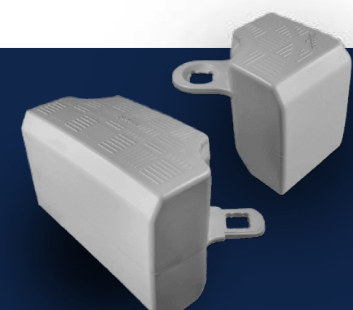
Cube: 5.5 kg (12 lbs.)
Low profile cube : 5 kg (11 lbs.)

LOAD CAPACITY

Cube: 272 kg per m²
Low Profile Cube: 210 kg per m²

SAFE WORKING LOAD

Single Layer: 100 kg per m²
Double Layer: 372 kg per m²



Meet the latest member of the Candock product range, our exclusive **Edge Line Accessory Range**. By engaging with our thousands of customers, we have come up with a way to meet your needs with the safest, most rugged and affordable way to improve the look of your Candock jetty!

With its slick and smooth dock outskirts, you can moor your boats and PWC's alongside a Candock Edge Line System, carefree!

Exceptional durability, weather resistance, and eco-friendliness make our HDPE dock system the clear choice with limitless possibilities.